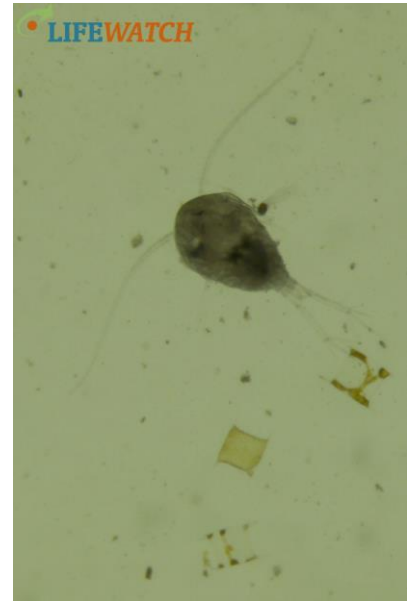




WP2 net



WP2 net "red flask"



Life zooplankton/fytoplankton

Protocol to use the WP2 net

- 1) Tell the crew to haul the WP2 net. Ask them to install the **flowmeter** in order to know the volume of water that passed the net. **Note this flow on the excel report file.** Register in MIDAS when the WP2 net is hauled up.
- 2) Once the WP2 net is up, make sure to rinse the outside of the net so all material is certainly in the red flask on the bottom.
- 3) take the red flask on the bottom and try to lose as many water as possible. Pour this material in a 1L flask.
- 4) Rinse the flask very thoroughly with soda water and add it to the recipient
- 5) Add formol to a 4% end concentration! Do this shortly after collecting since zooplankton will predate each other within the recipient.
- 6) In the lab, after fixation, formol will be replaced by 70% ethanol.

	On board	On land	Partner laboratory
Zooplankton	room temperature, 4% formol	200ml flask with formol, storage room	Bioarchive VLIZ